



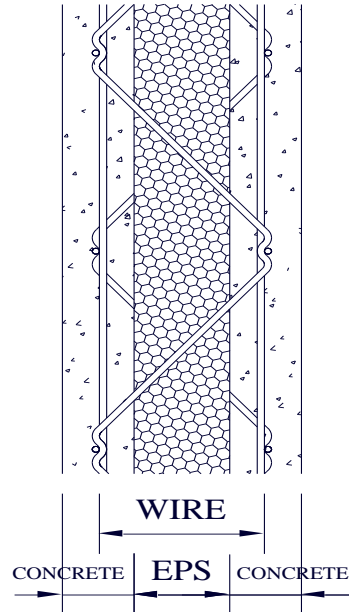
THE ULTIMATE PANEL TECHNOLOGY



Home construction with PANOTECH system In the village of garden home designed by architect you Bongkot Capricorn ornament. Vice President and Managing Director, BENT SEVERIN INTERNATIONAL DESIGN ASSOCIATES & GROUP.

- The system construction of reinforced concrete buildings using wood.
- Save time, labor and construction.
- The roof, which can add another 30% are living room, ATTIC and roof Windows, roof, SKYLIGHT and DORMER on the LAD watching the stars without heat insulation because.
- Wall's strength and weight do not necessarily have a pillar and beam. Construction of the roof slab walls can be a pole ladder beams, fencing.
- Than the normal method of construction, 2-3 times with different properties, heat and sound insulation due to reduction in power consumption, which is reducing the expense of long-continued.
- Construction technology widely used throughout the world with State-of-the-art automatic machines.
- Produced with State-of-the-art automatic machines

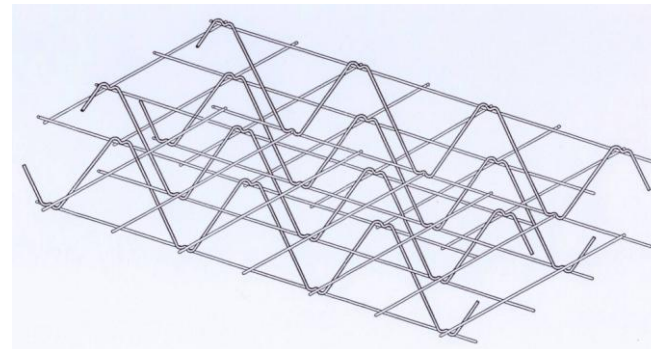
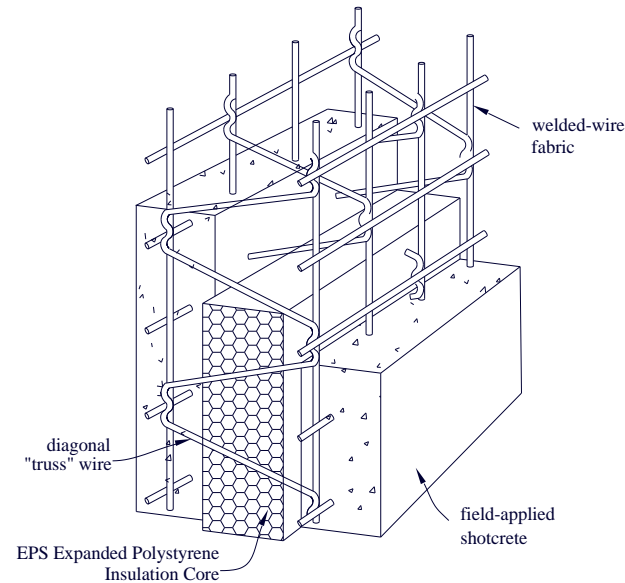
# PANOTECH SYSTEM



- With a MONOLITHIC STRUCTURE feature buildings or houses that were created with the PANOTECH both after Hurricane taifun can resist earthquakes without the erosion.
- All materials, including the production of Construction and quality control, every step is in accordance with ACI and ASTM.

## Features

- High-tensile steel wire lattice grille are two automatic size 2.6 – 3.0 mm distance 10 cm, with cast iron welding automatic cross border (TRUSS) Decker, i. installation make up a Three-Dimensional Space Frame Welded-Wire.
- Inside insert as insulation Expanded Polystyrene EPS type noise/Foam. Weight approx. 3.0-3.5 kg/sqm, or approximately 10 kg per 2.4 x 1.2 meter size
- Any increase in length 40 cm
- Sprayed concrete by way of SHOTCRETE on both sides of the construction of hand-tinting, as appropriate for your job
- Concrete strengths. 175 kg/cm<sup>2</sup> High-tensile steel wire is 7850 kg/cm<sup>2</sup>. Higher than the General steel construction approximately 3 times

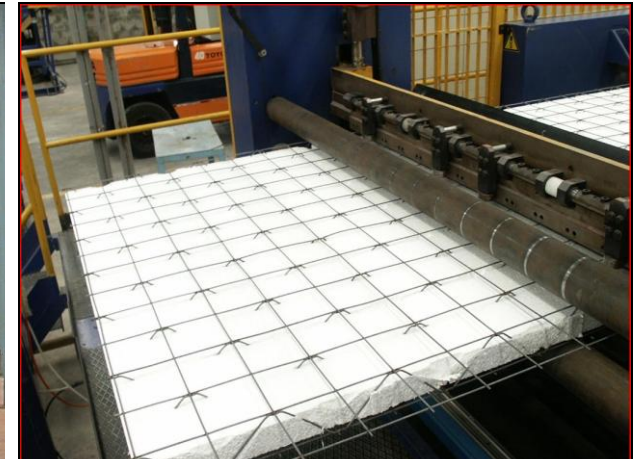




**A single manufacturer and supplier in Thailand Thai produced by automatic machinery at every step.**



The factory is located near Israel, the industrial estates to seaboard. Pluak daeng, Rayong approx. 30000 square meters. With a capacity of not less than 1,200,000 sq.m. Per year received from the BOI



## Productions. Test and construction of ACI and ASTM standards.

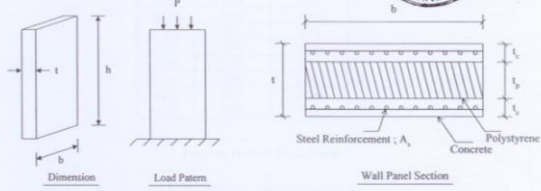
Impact strength test, press test results show the highest pressure 67tons.

Reference No. SPT 37/47 page 14 of 18

**DEPARTMENT OF CIVIL ENGINEERING  
CHULALONGKORN UNIVERSITY**

**Compressive Load Test on Wall Panel**

Project : Panotech Wall Panel Test Date of Test :  
Specimen : W320-1 Tested by :  
(The test results are good only for those specimen tested) (Assoc. Prof. Dr. Boonchai Stitmanathum)



**TEST SUMMARY**

Dimension	W320-1
Height (h)	321.7 cm
Width (b)	123.3 cm
Thickness (t)	10.6 cm
Concrete	Portland type 1 + Fine Aggregate < 0.5 cm
Concrete facing (t <sub>c</sub> )	2.8 cm
Compressive Strength (f <sub>c</sub> )	230 ksc
Concrete Area (A <sub>c</sub> )	690.5 cm <sup>2</sup>
Steel Reinforcement	Wire mesh steel dia. 3 mm @ 10 cm
Area (A <sub>s</sub> )	0.848 cm <sup>2</sup>
Tensile Strength (f <sub>s</sub> )	5500 ksc
Polystyrene	
Polystyrene layer (t <sub>p</sub> )	5.0 cm
Ultimate Load of Wall Panel	67 ton
Mode of Failure	Crushing near end of panel

*Boonchai Stitmanathum*  
(Assoc. Prof. Dr. Boonchai Stitmanathum)  
on behalf of  
Head of Civil Engineering Department



Sound reduction properties.

Tested in accordance with ASTM E90

The frequency (Hz)	Sound reduction value of various types of construction materials (dBA)				
	The bricks, 4 นิ้ว	Mirror 0.5 นิ้ว	6-inch light-mass concrete	PANOTECH Thickness 3 cm.	PANOTECH Thickness 5 cm
125	30.0	23.0	38.0	43.8	49.4
250	36.0	31.0	36.0	40.7	38.4
500	37.0	38.0	40.0	38.1	43.0
1000	37.0	40.0	45.0	37.7	44.7
2000	37.0	47.0	50.0	44.6	38.7
4000	43.0	52.0	56.0	45.9	46.7

**Thermal properties. Tested  
according to ASTM E119**

The tested material.	Thermal capacity (OC)
Brick	5.2
Two-hole brick	5.4
Brick block	6.7
PANOTEC H 3 cm	11.3
PANOTEC H 5 cm	14.5

Tests by students under the supervision of teachers.  
University of technology campus you proclaim  
God's soldiers.





# PANOTECH SYSTEM

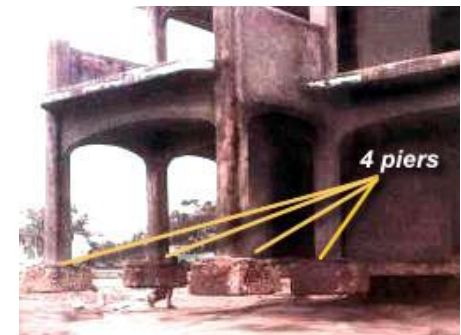


Important people of the world, United States President JIMMY CARTER ayangadit is a global organization of volunteers, HABITAT FOR HUMANITY has been working construction for many later used the same product PANOTECH.

Ambassador United States Thai country together with his Director, LAT krabang and Director construction joint using PANOTECH FOR both the HABITAT Foundation by HUMANITYTHAILAND, LAT krabang. When Nov. 13 47

## MONOLITHIC STRUCTURE

Construction of the building with the PANOTECH system will look the same throughout the meat. Have the strength to withstand the storm or flood or taifun hoerikhen level, the earthquake did not cause a building crumble down. It is safer to life of residents.





▶▶▶▶ The construction of the House with PANOTECH system from start to finish. ▶▶▶▶



## Useful in construction.

- Our customers do not have to use because of the construction of wood and reduce labor. Light weight, easy to install and move. Install quickly and easily. Do not use heavy equipment lift move. Two storey house in General. Only 8 people who take no more than 7 days in any shape, construction of architecture can be convenient transportation by common trucks. Nested storage pile at the construction unit, without the need for special needs. There is no damage from transportation. Stack store and install. Reduce the environmental impact



## Comfort in the building construction system

with EPS insulation PANOTECH not hot because of the thermal block or brick wall better than brick 2 x does not waste energy saving money because they don't have air conditioning or use less than normal. I cannot hear sound nuak together better than a brick wall, block or brick. Do not harm people. Animals or plants, and no, there are no rats, termites infested. Burglary was unable to climb on the roof because the solid roof structures without closing or ceiling. The furniture into a corner is because there are no pillars, annoy. I don't want two-layer wall construction to close the square pillars and transparent manner without having to increase the height of the floor because there are no beams, annoy. Created by design architects as examples.



Construction of the PANOTECH system. Applicable to all types of concrete building structure Available from home, saving to a house or building, high prices. Applicable to residential buildings, commercial buildings High buildings Job offices that do not have any other material cannot be lifted and moved. Many buildings in the world with the same system construction PANOTECH by several different companies scattered all over the world, including America, Europe, Australia, Middle East, Africa and Asia.



## Special roof, with only PANOTECH only.

Because they do not want a roof, ceiling and do not want to add more living space of not less than 30% with ATTIC roof for a bedroom or a storage room and a beautiful European-style DORMER Windows and a SKYLIGHT on the roof slopes.







The House of the architect you Bangkok  
Capricorn ornament Take advantage of  
the PANOTECH roof is roofs with  
door to terrace outside.



**Wall**



**Floor**



**Roof**



**Stair**

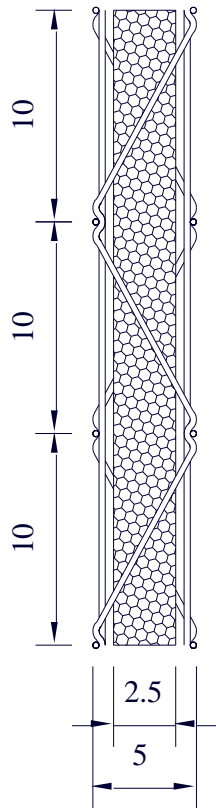


**The fence**

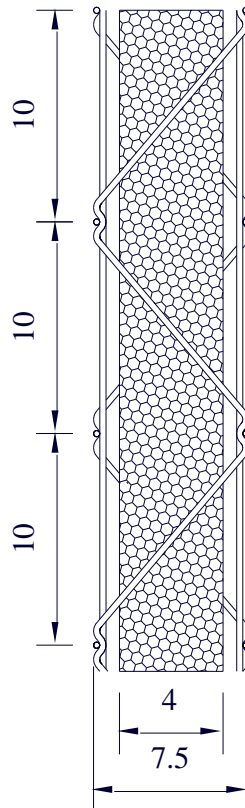




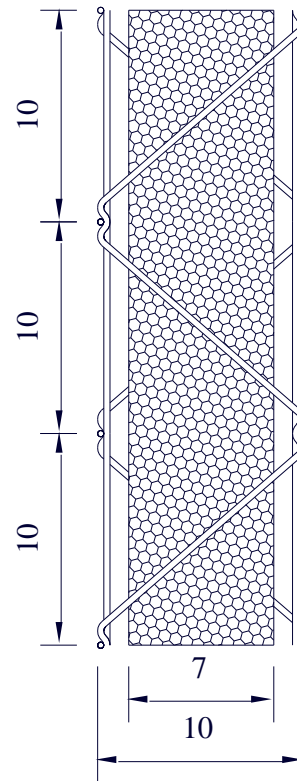
## TYPE OF PANOTECH



P1



P2



P3

The standard size for use.





**PANOTECH MFG LIMITED  
FACTORY 76 MOO 4 PLUAKDANG**

TEL.+6638659661-3 FAX.+6638878208

Website: [www.panotech.co.th](http://www.panotech.co.th)

Mail: [panotech@panotech.co.th](mailto:panotech@panotech.co.th)